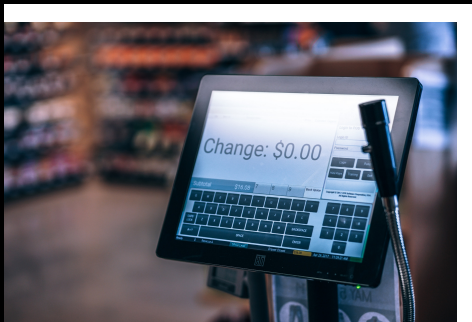


## EMPLOYMENT INFORMATION

Income per Capita	\$25,748
Household Income	\$54,534
Family Median Income	\$63,111
Unemployment Rate	4.30%
Future Job Growth	42.59%

## POPULATION BY OCCUPATION

Health Care and Social Services	14.1%
Retail Trade	13.5%
Manufacturing	10.9%
Public Administration	10.7%
Construction	9.6%
Educational Services	6.5%
Finance	4.8%
Administration	4.7%
Other	4.4%



## LARGEST EMPLOYERS

COMPANY	EMPLOYEES
Dallas Public Schools	346
Polk County	305
Forest River, Inc.	280
Dallas Retirement Village	245
Walmart	168
West Valley Hospital	146
James W. Fowler Affiliates	142
Safeway Stores, Inc.	120
City of Dallas	70



For more information, contact the  
Dallas Area Visitors Center and  
Chamber of Commerce at  
503.623.2564 or reach us by email at  
[info@dallasoregon.org](mailto:info@dallasoregon.org)

# #dallasoregon



[www.exploredallasoregon.org](http://www.exploredallasoregon.org)

## MANUFACTURING INDUSTRY

The manufacturing industry includes all branches of human activities that transform raw materials into products or goods. The secondary sector includes secondary processing of raw materials, food manufacturing, textile manufacturing and industry.

### Manufacturing Companies in Dallas:

#### American Gas & Technology

(503) 420-4442

[www.agtllng.com](http://www.agtllng.com)

#### Forest River, Inc.

(503) 831-1200

[www.forestriverinc.com](http://www.forestriverinc.com)

#### MAK Grills, Inc.

(503) 623-1234

[www.makgrills.com](http://www.makgrills.com)

#### OrePac Building Products

(503) 570-6351

[www.orepac.com](http://www.orepac.com)



## WORKSOURCE OREGON

### WORKSOURCE OREGON HELPS YOU:

#### Find a job

At centers you can search for work, assess your skills, explore careers and connect directly with local businesses.

#### Sharpen your job search skills

They can help you compete in today's job market.

#### Learn and update skills

Worksource Oregon can connect you with skills training, apprenticeship programs, continuing education, skill and interest assessments and adult basic education, including GED and English language learning.

Worksource Oregon, Polk County  
is located at:  
580 Main St B, Dallas, OR 97338  
(503) 831-1950



## HEALTHCARE COMPANIES IN DALLAS

#### Dallas Family Medicine

(503) 623-2345

[www.dfmcare.com](http://www.dfmcare.com)

#### Dallas Retirement Village

(503) 623-5581

[www.dallasretirementvillage.com](http://www.dallasretirementvillage.com)

#### Dallas Vision Clinic

(503) 623-9233

#### Polk Adolescent Day Treatment Center

(503) 623-5888

#### Polk County Public Health Dept.

(503) 623-8175

[www.co.polk.or.us/ph](http://www.co.polk.or.us/ph)

#### West Valley Hospital

(503) 623-8301

[www.salemhealth.org/services/salem-health-west-valley](http://www.salemhealth.org/services/salem-health-west-valley)

#### Yenne & Schofield Orthodontists

(503) 623-5002

[www.haveagreatsmile.com](http://www.haveagreatsmile.com)